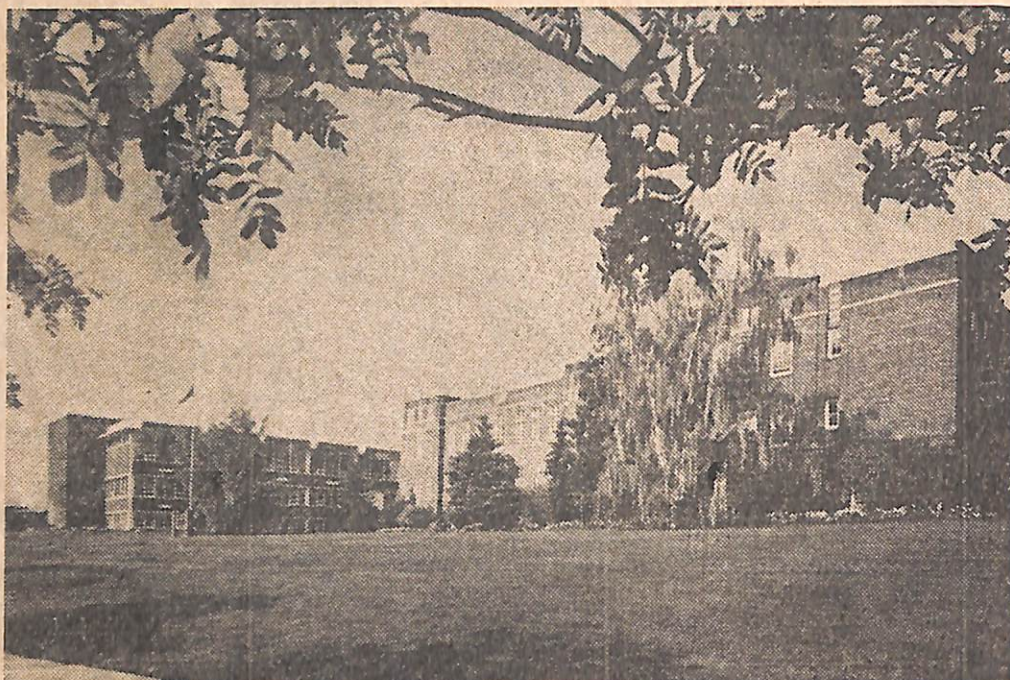
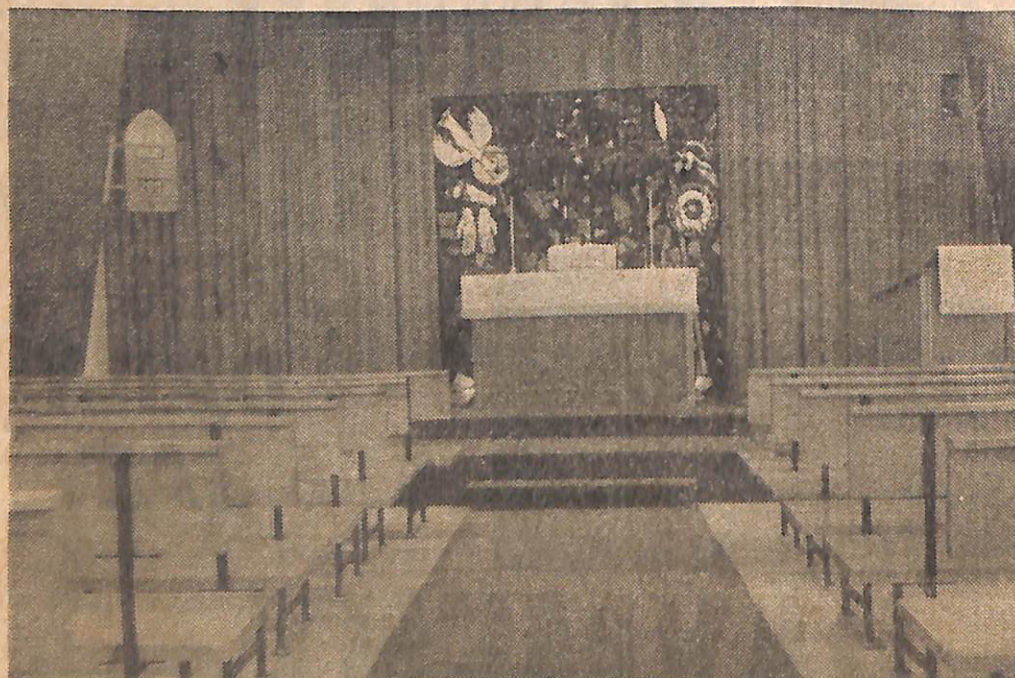


TOTAL EDUCATION — FOR THE TOTAL INDIVIDUAL²

JUNE 27/69



CONCORDIA LUTHERAN COLLEGE AND HIGH SCHOOL—CO-EDUCATIONAL, JUNIOR COLLEGE WITH FIRST-YEAR UNIVERSITY AFFILIATED COURSES OF STUDY IN THEOLOGY, ARTS, EDUCATION, SCIENCE, PRE-MEDICINE, PRE-DENTISTRY, AND LABORATORY SCIENCE PROGRAMS — ALSO A COMPLETE SENIOR HIGH SCHOOL MATRICULATION PROGRAM—BOTH ENRICHED WITH INSTRUCTION IN THE CHRISTIAN TRADITION.



CHAPEL AT CONCORDIA LUTHERAN COLLEGE AND HIGH SCHOOL

Concordia Lutheran College and High School is concerned with the education of the total person. Its educational philosophy and programs of study aim to provide not only the best in secular knowledge, but while doing this, to include also the spiritual dimension in education. An individual's thought, feeling and motivation are always involved in his actions and behavior, so that an education which neglects any of these factors must of necessity be in some degree inadequate. Such an education may provide a good knowledge of facts, but it will be a knowledge without wisdom and ultimate meaning. A unifying principle, therefore, is needed, to integrate and give meaning to the knowledge that education conveys.

Concordia Lutheran College and High School operate with the conviction that only a Christian education can provide this unifying principle. Its educational philosophy rests on the Bible premise that "the fear of the Lord is the beginning of wisdom." Although required by its nature as an institution of secondary and post-secondary education to be preoccupied with intellectual pursuits, Concordia aims to give meaning to these pursuits in terms of an individual's relationship to God and his responsibilities to his fellowman. Through required courses in religion, by means of daily chapel worship, and through close association between students and instructors, Concordia endeavors to utilize the educational experience of its students for the purpose of developing the essentially spiritual nature of the individual.

Concordia extends an invitation to academically qualified students, who are desirous of the best in secular education, enriched with instruction in the Christian tradition, to enroll in either its Senior High School or Junior College departments.

For a copy of the catalogue (High School or College), for further information, direct inquiries to The Registrar:

CONCORDIA LUTHERAN COLLEGE AND HIGH SCHOOL
7128 - Ada Boulevard, Edmonton 20, Alberta. Write or phone 477-6955



The Edmonton Journal

A DIVISION OF SOUTHAM PRESS LIMITED

EDMONTON 15, ALBERTA

July 2nd 1969

Mr. Walter F. Seehagel,
Concordia College,
7128 Ada Blvd.,
Edmonton, Alberta

Dear Mr. Seehagel,

We are very pleased to have received the retail display advertising contract which you recently signed. The contract calls for insertion of 1,250 lines within a year from June 20th 1969, at a rate of 44 cents per line. An accepted copy of this contract is enclosed for your files.

Let me assure you that we are anxious to be of service to you at all times. Should there be any question about your advertising please contact the salesman handling your account, Gordon McCormack, or Bryson W. Stone, Retail Advertising Manager.

In view of our mutual interest in good merchandising, we look forward to the opportunity of serving you during the next twelve months through the advertising columns of The Edmonton Journal. Our average net paid circulation is in excess of 150,000 copies daily.

Yours truly,

Bryson W. Stone
Retail Advertising Manager

BWS/cfl